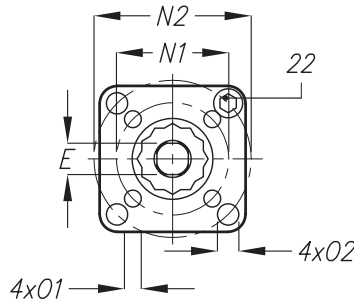




V206 Series, 2Pc Body, Flanged End Full Bore Ball Valves

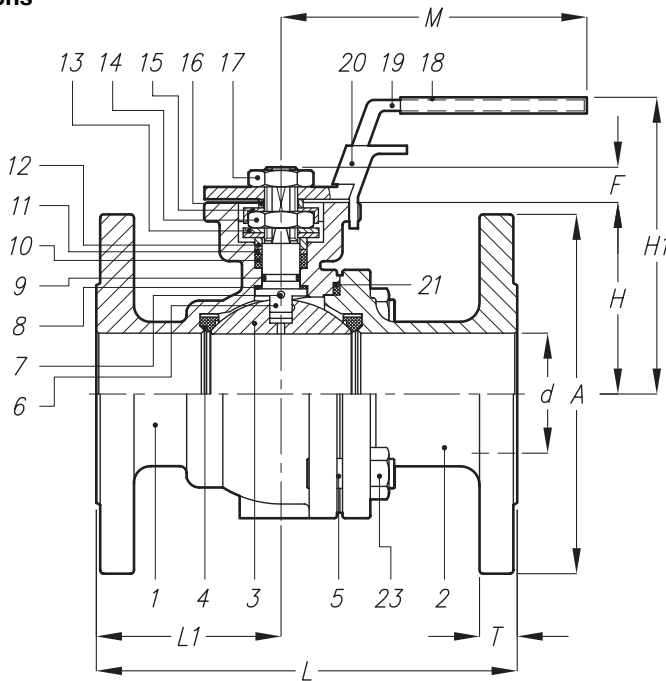
Proval V206 Series ball valves have 2 pc body construction according to DIN3202-F4 Standard. Direct ISO5211 top flange provides direct actuator assembly on V206 series ball valves.



Material List

No	Part Name	Material
1	Body	AISI316 St. Steel
2	Cap	AISI316 St. Steel
3	Ball	AISI316
4	Ball Seat	PTFE
5	Bolts	AISI316
6	Stem	AISI316
7	Anti-Static Device	AISI316
8	Thrust Washer	PTFE
9	O-Ring	Viton
10	Stem Packing	PTFE
11	Gland Nut	AISI316
12	Metal Ring	AISI316
13	Belleville Washer	AISI301
14	Stem Nut	AISI316
15	Locking Device	AISI316
16	Spacer Sleeve	AISI316
17	Stem Nut	AISI316
18	Handle Cover	Plastic
19	Hand Lever	AISI304
20	Lever Locking	AISI304
21	Body Gasket	PTFE
22	Stopper	AISI304
23	Nut	AISI316

Dimensions



Dimensions (mm)

Size (DN)	d	PN16	PN40	E	F	H	H1	L	PN16	PN40	M	N1	N2	1	2	PN16	PN40	PN16	PN40
		A	A						L1	L1						T	T	m(kg)	m(kg)
15	15,0	95	95	9	9	48,0	79,0	115	-	49,5	145	36	42	6	6	16	16	-	2,4
20	20,0	105	105	9	9	53,0	84,0	120	-	54,0	145	36	42	6	6	18	18	-	3,2
25	25,0	115	115	11	11	58,0	90,5	125	-	56,0	175	42	50	6	7	18	18	-	4,2
32	32,0	140	140	11	11	71,0	103,5	130	-	57,4	175	42	50	6	7	18	18	-	5,5
40	38,0	150	150	14	14	76,0	111,0	140	-	58,0	194	50	70	7	9	18	18	-	6,9
50	50,0	165	165	14	14	85,0	120,0	150	-	63,0	194	50	70	7	9	20	20	-	9,5
65	63,5	185	185	17	17	101,5	150,0	170	69,0	64,0	265	70	102	9	11	18	22	13,8	13,8
80	76,0	200	200	17	17	111,5	160,0	180	74,5	69,5	265	70	102	9	11	20	24	17,7	17,8
100	100,0	220	235	22	22	140,0	182,0	190	83,0	78,0	400	-	102	-	11	20	24	25,2	30,5
125	125,0	250	270	27	27	183,0	260,0	325	153,0	160,0	600	-	125	-	14	22	26	60,0	62,5
150	150,0	285	300	27	27	202,0	280,0	350	162,0	176,0	800	-	125	-	14	22	28	71,8	73,8
200	200,0	340	375	27	27	252,5	279,5	400	191,0	221,0	-	-	125	-	14	24	34	127,0	152,0