

## V800 Series Threaded / Flanged End Pinch Valves

Proval pneumatic pinch valves are widely used in mining industries in high mechanical abrasive applications, slurries and other industrial applications.

Proval V800 pinch valve sleeves can be replaced easily. Pneumatic pinch valves are to be operated by a 3/2 way solenoid valve.

**Main application areas:**  
Mining, Metallurgy, chemical, water treatment and other general industrial applications.

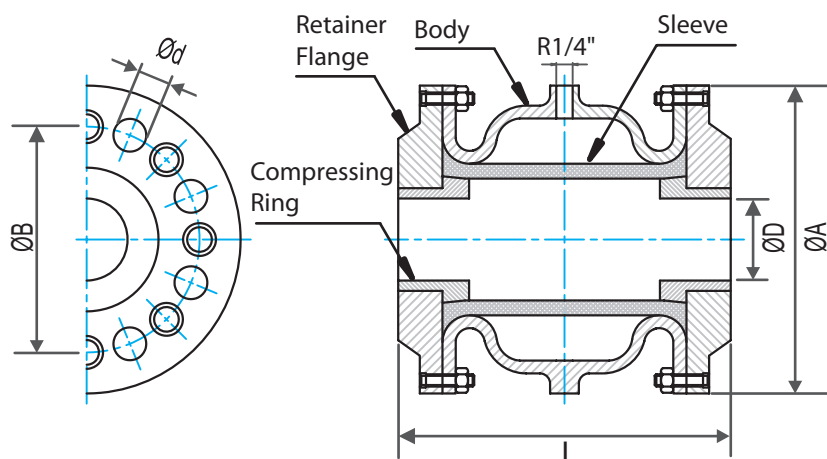
In order to ensure 100% tightness, pipe line pressure must be min.  $\Delta p$  1,5 bar lower than air supply pressure.



Flanged End Pinch Valve

### Flanged End Pinch Valves (DN40-DN250)

Available Body Materials : Alu Casting / Ductile Iron



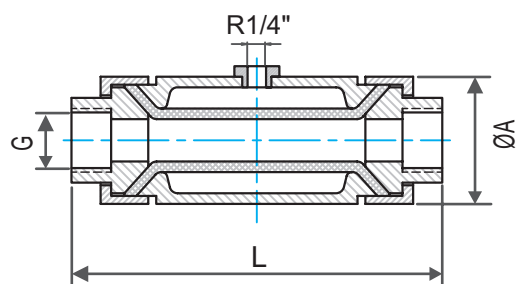
Flanged End Pinch Valve

#### Dimensions (mm)

DN	ØD	L	ØA	ØB	Ød	n
40	40	155	150	110	18	4
50	60	166	165	125	18	4
65	60	183	185	145	18	4
80	75	220	200	160	18	8
100	100	280	220	180	18	8
125	120	348	250	210	18	8
150	145	418	285	240	22	8
200	190	555	340	295	22	8
250	250	610	390	350	22	12

### Threaded End Pinch Valves (1/2" - 2")

Available Body Materials : Carbon Steel / Stainless Steel



Threaded End Pinch Valve

#### Dimensions (mm)

Size (DN)	G	L	ØA
15	1/2"	135	60
20	3/4"	142	60
25	1"	145	75
32	1-1/4"	170	90
40	1-1/2"	200	110
50	2"	220	120